

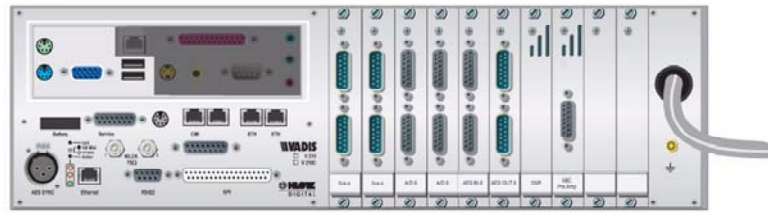
# StudioHub+ Solutions for Klotz Vadis Systems

This page features the Studio-Hub+ items custom made for Klotz as well as the most popular StudioHub+ solutions for all your studio wiring. For the complete line of StudioHub+ solutions with hundreds of other wiring products, see <http://www.studiohub.com>

**\*NOTE\***

All red part numbers indicate customer specified cable lengths. Substitute from 010' to 250' in place of stock length shown to order a custom length.

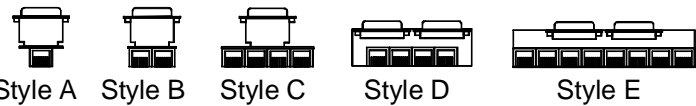
## Klotz Vadis Equipment



Select DB-15 cable assemblies to harness to Hubs

-OR-

Select "Dongle" adapters to adapt individual cards to RJ-45 StudioHub+ connectivity



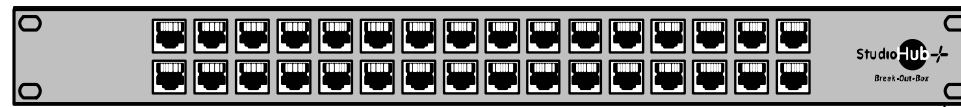
DB-15 male connector

DB-15 female connector

## SH+ Hub-32 Rack Mount StudioHub+ Audio Break-Out Hub

Connect up to 32 analog (mono or stereo) or digital AES/EBU channels

Note: Use MTE Cables with the HUB32



Part #HUB32 - Rack Mounts in 1 RU (typically on rack rear rails)

### MTE Cable #DB15MTE-010

Up to 8 Analog or Digital Outputs - DB-25 male connector to 8 MTE 2-pin connectors (use 2 cables for each 8 output card and 1 cable for each 4 output card.)

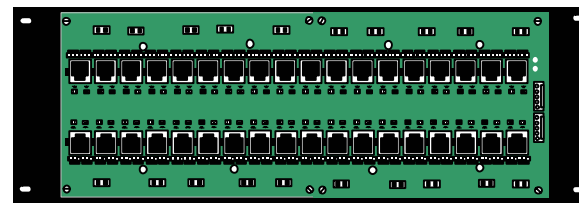
### MTE Cable #DB15FMTE-010

Up to 8 Analog or Digital Inputs - DB-25 female connector to 8 MTE 2-pin connectors (use 2 cables for each 8 output card and 1 cable for each 4 output card.)

## SH+ HUB36-DC Wall Mount StudioHub+ Audio Break-Out Hub

Connect up to 36 Analog or Digital Channels and add DC-Link Power

Note: Use MTE Cables with the HUB36-DC

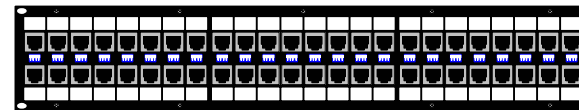


Part #HUB36-DC - Wall Mount or Rack Mount in 3 RU

## SH+ PATCH-48 Rack Mount Patch Panel

Connect up to 24 Analog or Digital Channels w/ Front Panel Normalizing

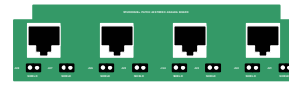
Note: Use Type BK/BL Dongles and standard CAT-5 patch cables with the PATCH-48



Part #PATCH-48 - Rack Mount in 2 RU

Rear Adapters 6 Required (3 per row)

Install on top row and bottom row of rear panel (in any mix)



### STEREO ANALOG MODEL

(1/3<sup>rd</sup> WIDTH REAR PANEL ADAPTER)  
4 RJ-45 connectors each conducting 4-pair (all RJ-45 pins) to 2-pairs each (RJ-45 pins 1,2,3 & 6) of two front panel RJ-45's.



### I/O MODEL

(1/3<sup>rd</sup> WIDTH REAR PANEL ADAPTER)  
8 RJ-45 connectors each conducting 2-pair (RJ-45 pins 1,2,3 & 6) on a 1-to-1 basis from the front panel RJ-45's to the corresponding rear panel RJ-45's.



### AES/EBU MODEL

(1/3<sup>rd</sup> WIDTH REAR PANEL ADAPTER)  
2 RJ-45 connectors each conducting 4-pair (all RJ-45 pins) to 1-pair each (RJ-45 pins 1 & 2) of four front panel RJ-45's.

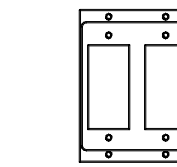
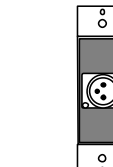
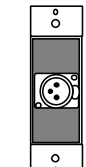


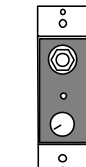
Plate Table "Well" Mounts  
p/n SH-WELL1 (single)  
p/n SH-WELL2 (dual)  
p/n SH-WELL3 (triple)  
p/n SH-WELL4 (quad)



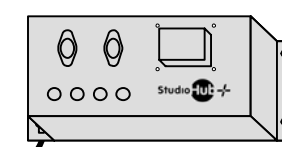
XLR Female Mic Jack (passive)  
p/n SH-1XLRF



XLR Female Mic Pre-Amp (powered)  
p/n SH-MIC

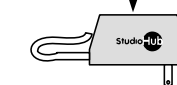


Head Phone Amp (powered)  
p/n SH-HP

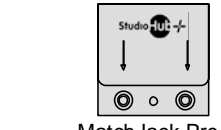


StudioHub+ External Power Supply  
p/n PS-EXT

Use 1 wall wart supply per powered peripheral or power all peripherals centrally by using the Hub36-DC and an external power supply



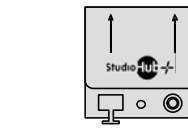
Wall Wart External Power Supply  
p/n PS-WW



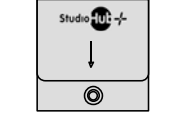
MatchJack Pre-Amp In (powered)  
p/n MJ-IN



MatchJack Pre-Amp Out (powered)  
p/n MJ-OUT



MatchJack S/PDIF to AES/EBU Converter (powered)  
p/n MJ-SPDIFIN



MatchJack AES/EBU to S/PDIF Converter (passive)  
p/n MJ-SPDIFOUT



CAT-5 Patch Cable

Select various length CAT-5 shielded patch cords and XLR and TRS adapters to wire directly to source gear

## "Classic" Style Vadis Cards

Vadis Card	Configuration	RS Part #	Type	Connectors	Style
Klotz V324 Card	2 Mic In (with phantom power) (2 Dongles required per card) (Insert points not supported)	12553	AL	1 DB9(M) to 1 RJ-45	A
Klotz V316/318 Cards	2 Analog Stereo In	12330	J	1 DB15(M) to 2 RJ-45's	B
	4 Analog Mono In	12332	L	1 DB15(M) to 4 RJ-45's	C
	2 Analog Stereo Out	12331	K	1 DB15(F) to 2 RJ-45's	B
Klotz V317 Card	4 Analog Mono Out	12333	M	1 DB15(F) to 4 RJ-45's	C
	4 Analog Stereo Out	12333	M	1 DB15(F) to 4 RJ-45's	C
Klotz V240 Card	2 AES-EBU In	12335	H	1 DB9(M) to 2 RJ-45's	B
Klotz V241 Card	2 AES-EBU Out	12326	I	1 DB9(F) to 2 RJ-45's	B

## "New" High Density Style Vadis Cards

Vadis Card	Configuration	RS Part #	Type	Connectors	Style
Klotz V344 Card	4 Mic In (with phantom power)	12332	L	1 DB15(M) to 4 RJ-45's	C
Klotz V618/619 Cards	4 Analog Stereo In	12570	AF	2 DB15(M) to 4 RJ-45's	D
	8 Analog Mono In	12566	AE	2 DB15(M) to 8 RJ-45's	E
	4 Analog Stereo Out	12568	AH	2 DB15(F) to 4 RJ-45's	D
Klotz V638 Card	8 Analog Mono Out	12564	AG	2 DB15(F) to 8 RJ-45's	E
	4 Analog Stereo Out	12564	AG	2 DB15(F) to 8 RJ-45's	E
Klotz V718/719 Card	8 AES-EBU In	12566	AE	2 DB15(M) to 8 RJ-45's	E
Klotz V738 Card	8 AES-EBU Out	12564	AG	2 DB15(F) to 8 RJ-45's	E

## CAT-5 4-Pair Dongles for PATCH-48

Vadis Card	Configuration	RS Part #	Type	Connectors	Style
Klotz V618/619/718/719 Card	4 Input Signals	* 12661	BK	1 DB15(M) to 1 RJ-45's	A
Klotz V638/639/738 Cards	4 Output Signals	* 12662	BL	1 DB15(F) to 1 RJ-45's	A

\* 2 Dongles required per Klotz card

## Klotz GPI Interface



Control cable #15012 DB-37M to 34 pin r ay outputs

Control c o 34 pin ribbon itputs

### NOTES

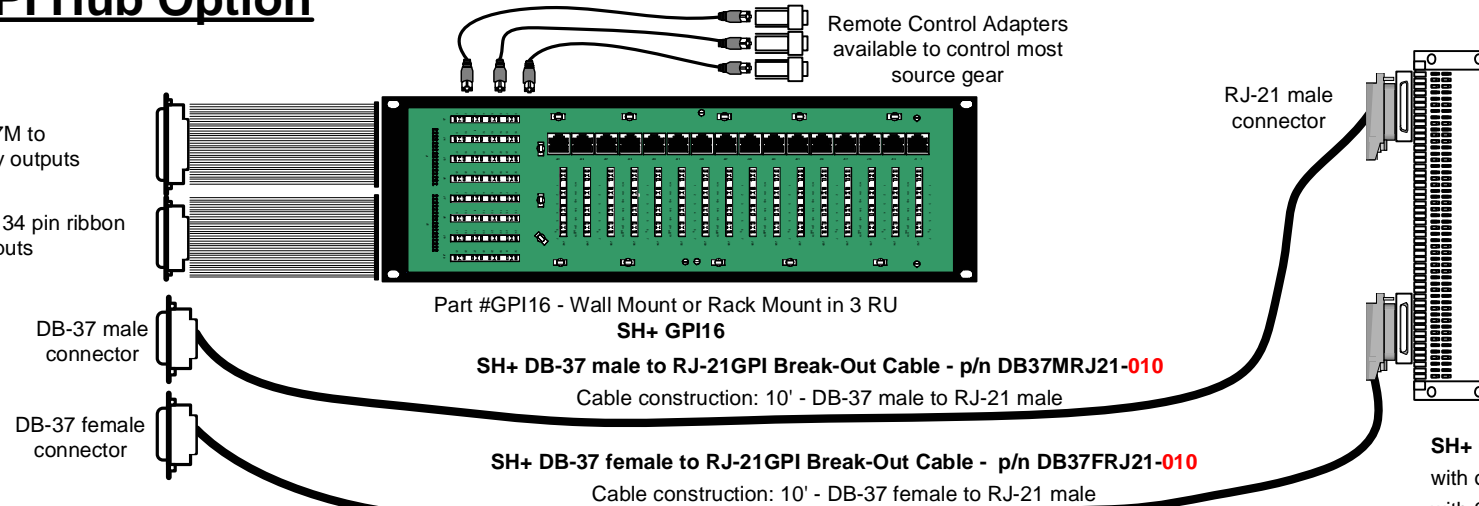
Two DB-37 male cables & two DB-37 female cables (ribbon or RJ-21) required to break-out all Klotz GPI interface units

One DB-37 male cable (ribbon or RJ-21) required to break-out Klotz 210 series control frame

One DB-37 male cable & one DB-37 female cable (ribbon or RJ-21) required to break-out all Klotz Paradigm console units

Order 66B punch blocks or GPI Hub and adapters separately

## GPI Hub Option



## Punch Block Option

To break-out GPI Interface order:

- 2- p/n DB37MRJ21-010 - DB-37 male to RJ-21 cables
- 2- p/n DB37FRJ21-010 - DB-37 female to RJ-21 cables
- 2- p/n 15811 - 66B blocks with 2 RJ-21 connectors

To break-out 210 frame order:

- 1- p/n DB37MRJ21-010 - DB-37 male to RJ-21 cable
- 1- p/n 11616 - 66B block with 1 RJ-21 connector

To break-out Paradigm console surface order:

- 1- p/n DB37MRJ21-010 - DB-37 male to RJ-21 cable
- 1- p/n DB37FRJ21-010 - DB-37 female to RJ-21 cable
- 1- p/n 15811 - 66B block with 2 RJ-21 connectors

### SH+ 66B Punch Blocks

with one integrated RJ-21 (female) connector - p/n 11616 (shown)  
with 2 integrated RJ-21(female) connectors - p/n 15811

AUDIO

CONTROL