

NOTE
 All red part numbers indicate customer specified cable lengths.
 Substitute from 010' to 250' in place of stock length shown to
 order a custom length.

StudioHub+ Solutions for Wheatstone Bridge Systems

This page features the StudioHub+ items custom made for
 Wheatstone as well as the most popular StudioHub+ solutions for
 all your studio wiring.

For the complete line of StudioHub+ solutions with hundreds of
 other wiring products, see <http://www.studiohub.com>

Wheatstone Bridge Equipment



AES-2024/8 Digital 8 Input Card
 DO-2001 Digital 8 Output Card

AES-2024/16 Digital 16 Input Card
 DO-2024/16 Digital 16 Output Card
 ADI-2001 Analog 16 Input Card
 AO-2001 Analog 16 Output Card
 MIC-2001 Analog Mic 8 I/O Card



Any audio I/O card may be ordered with
 RJ-45 connectivity.
 When using with StudioHub+ wiring
 products, be certain to specify
 STUDIOHUB+ STANDARD PIN-OUTS

SH+ Hub-32 Rack Mount StudioHub+ Audio Break-Out Hub

Connect up to 32 analog (mono or stereo) or digital AES/EBU channels



Part #HUB32 - Rack Mounts in 1 RU (typically on rack rear rails)

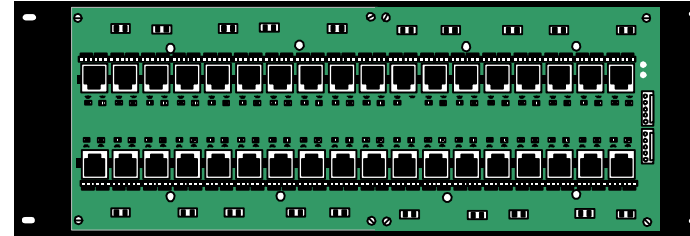
For Rack-Room Installations

Wheatstone Module Cable #BRIDGEMTE-010
 Up to 8 Analog or Digital Inputs or Outputs - DB-25 male
 connector to 8 MTE 2-pin connectors
 (order 2 cables per plug-in card with 2 DB-25
 connectors and 1 cable per plug-in card with 1 DB-25
 connector))

For "Back Wall" & Under-Cabinet Mounting

SH+ Hub36-DC Wall Mount StudioHub+ Audio Break-Out Hub

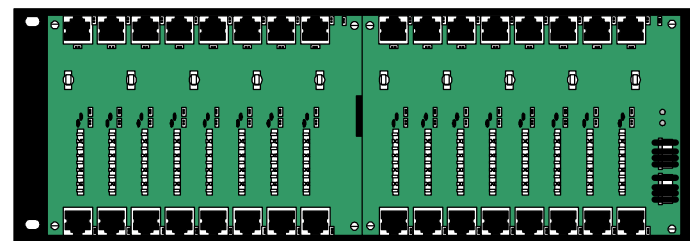
Connect up to 36 analog (mono or stereo) or digital AES/EBU channels



Connects up to 36 MTE style input cables and 36 RJ-45 output cables

SH+ Hub16-DC Wall Mount StudioHub+ Audio Break-Out Hub

Connect up to 16 analog (mono or stereo) or digital AES/EBU channels



Connects up to 16 RJ-45 input cables and 16 RJ-45 output cables

DB-25 male
 connector

Order RJ-45 to RJ-45 patch cables when
 for Bridge modules with RJ-45 connectivity

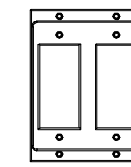
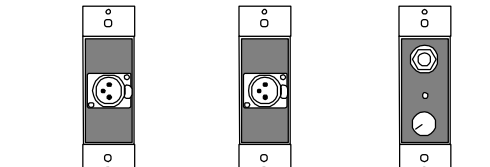
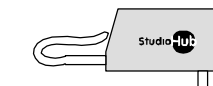


Plate Table "Well" Mounts
 p/n SH-WELL1 (single)
 p/n SH-WELL2 (dual)
 p/n SH-WELL3 (triple)
 p/n SH-WELL4 (quad)

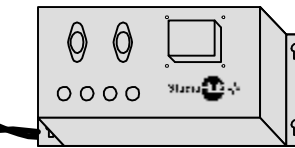


XLR Female
 Mic Jack
 (passive)
 p/n SH-1XLRF
 XLR Female Mic
 Pre-Amp
 (powered)
 p/n SH-MIC
 Head Phone
 Amp
 (powered)
 p/n SH-HP

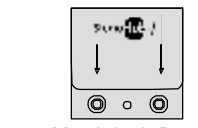


Wall Wart External
 Power Supply
 p/n PS-WW

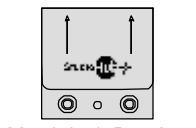
Use 1 wall wart supply per
 powered peripheral or power
 all peripherals centrally by
 using the Hub36-DC and an
 external power supply



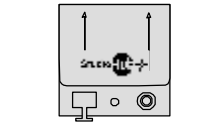
StudioHub+ External
 Power Supply
 p/n PS-EXT



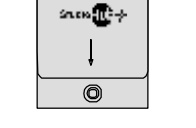
MatchJack Pre-Amp
 In (powered)
 p/n MJ-IN



MatchJack Pre-Amp
 Out (powered)
 p/n MJ-OUT



MatchJack
 S/PDIF to AES/EBU
 Converter (powered)
 p/n MJ-SPDIFIN



MatchJack
 AES/EBU to S/PDIF
 Converter (passive)
 p/n MJ-SPDIFOUT



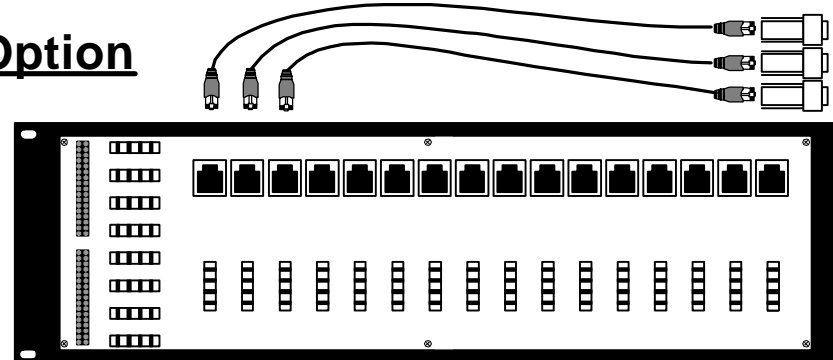
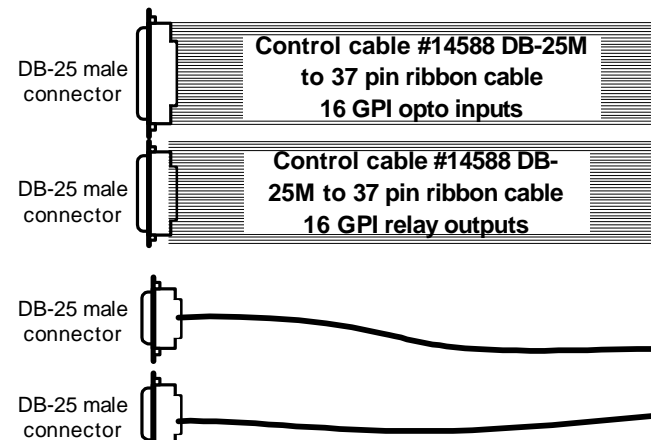
CAT-5 Patch Cable

Select various length
 CAT-5 shielded patch
 cords and XLR and TRS
 adapters to wire directly
 to source gear

LIO-2001 Logic I/O card



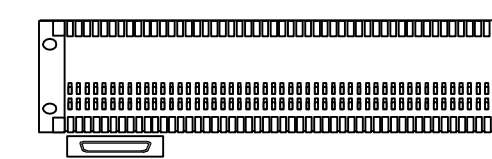
GPI Hub Option



SH+ GPI-16
 Part #GPI16 - Wall Mount or Rack Mount in 3 RU

Remote Control Adapters
 available to control most
 source gear

Punch Block Option



SH+ 66B Punch Blocks
 w/ integrated RJ-21 (female)
 connector p/n 11616
 also available - w/ 2
 integrated RJ-21(female)
 connectors p/n 15811

SH+ RJ-21 to DB-25 GPI Break-Out Cable p/n DB25MRJ21-010
 Cable construction: 10' - DB-25 male to RJ-21 male (order 2 for each LIO-2001 Logic I/O card*)

A
U
D
I
O

C
O
N
T
R
O
L